



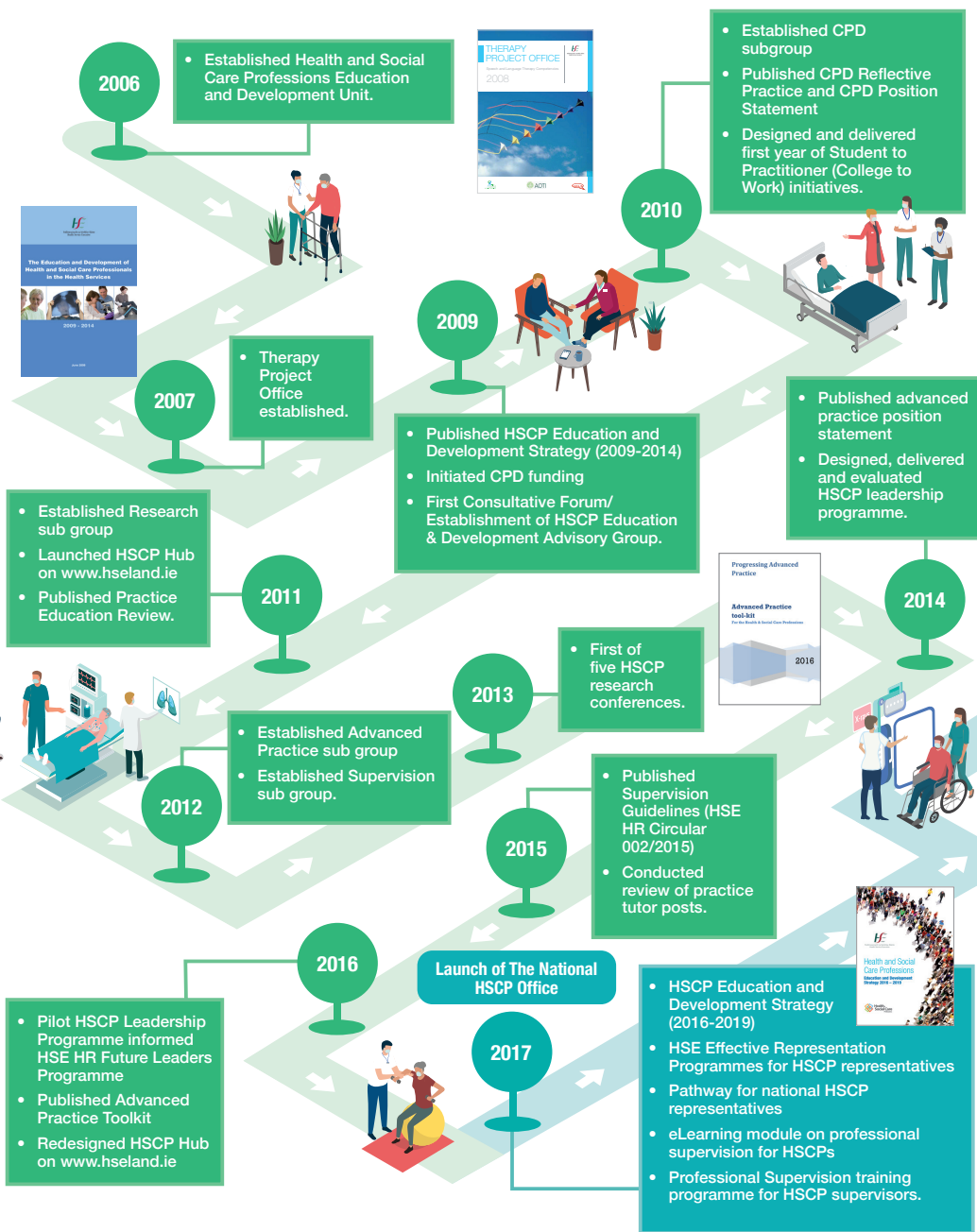
# The National HSCP Office

## Our journey so far...



### Vision of the National Health & Social Care Professions Office

Strategically leading and supporting HSCP to maximise their potential and achieve the greatest impact for the design, planning, management and delivery of people centred, integrated care.



- First National HSCP conference
- A Guide to HSCP published
- HSCP Representative Network and Toolkit published
- National IDDSI Implementation Project launched
- Professional supervision training programme for HSCP supervisees
- National HSCP Quality Framework for Sustainable Practice Education commissioned
- Study on HSCP Leadership
- Clinical Leadership Competency Framework in partnership with ONMSD
- 2nd Unscheduled Care Conference
- Empowering Self and Others in partnership with ONMSD
- Represented HSCP on HSE commissioning groups.

- HSCP Response During COVID-19 Poster
- HSCP Repository on HSELand
- IDDSI Module on HSELand
- National HSCP Office Research Seed Fund
- Practice Placement Lead (Temporary)
- Telehealth Project Officers (Temporary)
- HSCP Leadership Needs Survey and Webinars delivered
- Sonographers Post Graduate Education Demonstrator Programme concluded
- HSCP Advanced Practice Working Group established.



### Our Next Steps

The National HSCP Office is fully committed to our vision of maximising the potential of all HSCPs. We will work extensively to develop and expand the scope of the office in order to deliver on our 9 commitments as set out in the HSCP Deliver Framework. Working in partnership with all our stakeholders, we strive to provide strategic leadership and support to our HSCP colleagues in the areas of education, workforce development and planning, and ensuring HSCPs are adequately represented on relevant clinical and integrated programmes, and at executive leadership level.

We are incredibly **grateful** and **thankful** to all who have contributed to, and supported us in the many fantastic achievements outlined within this document. We look forward to new and exciting challenges ahead as we continue our ongoing journey of expansion and continued collaboration.

✉ [hscp.nationaloffice@hse.ie](mailto:hscp.nationaloffice@hse.ie)